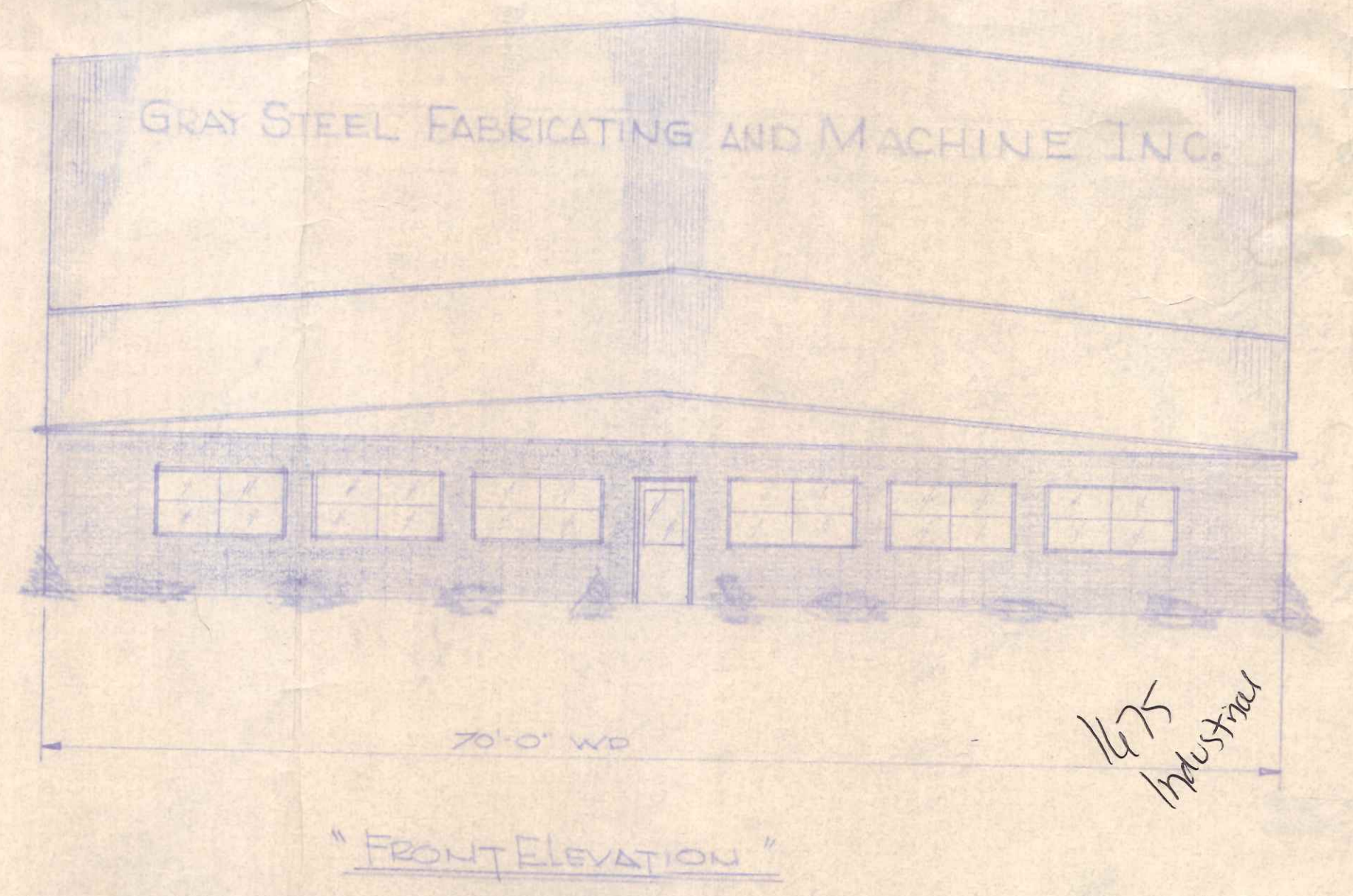
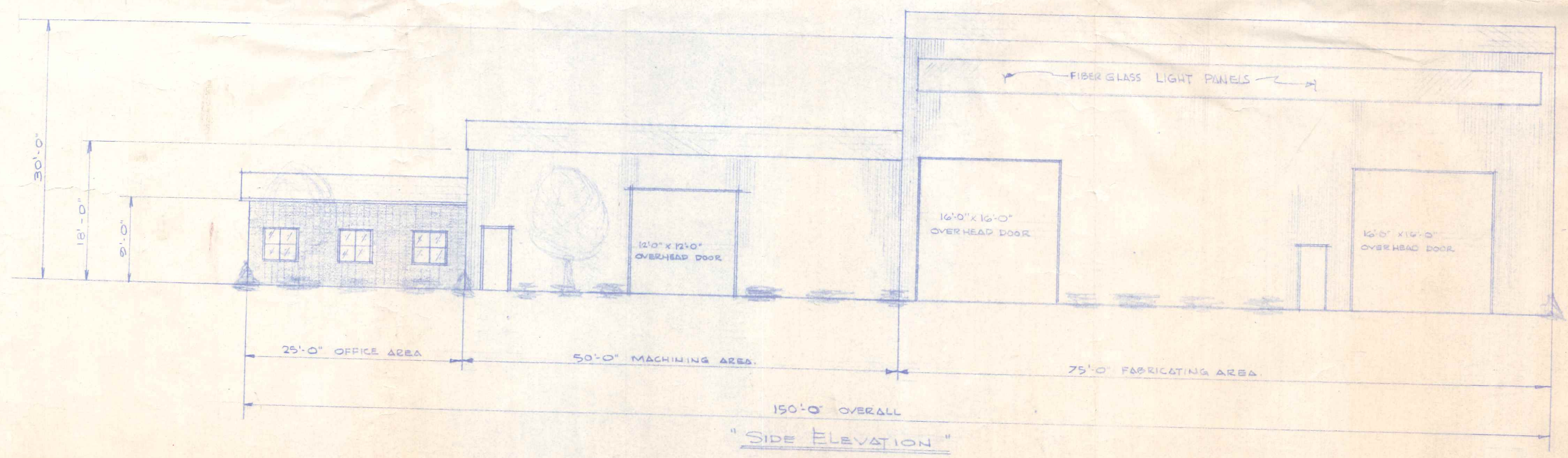
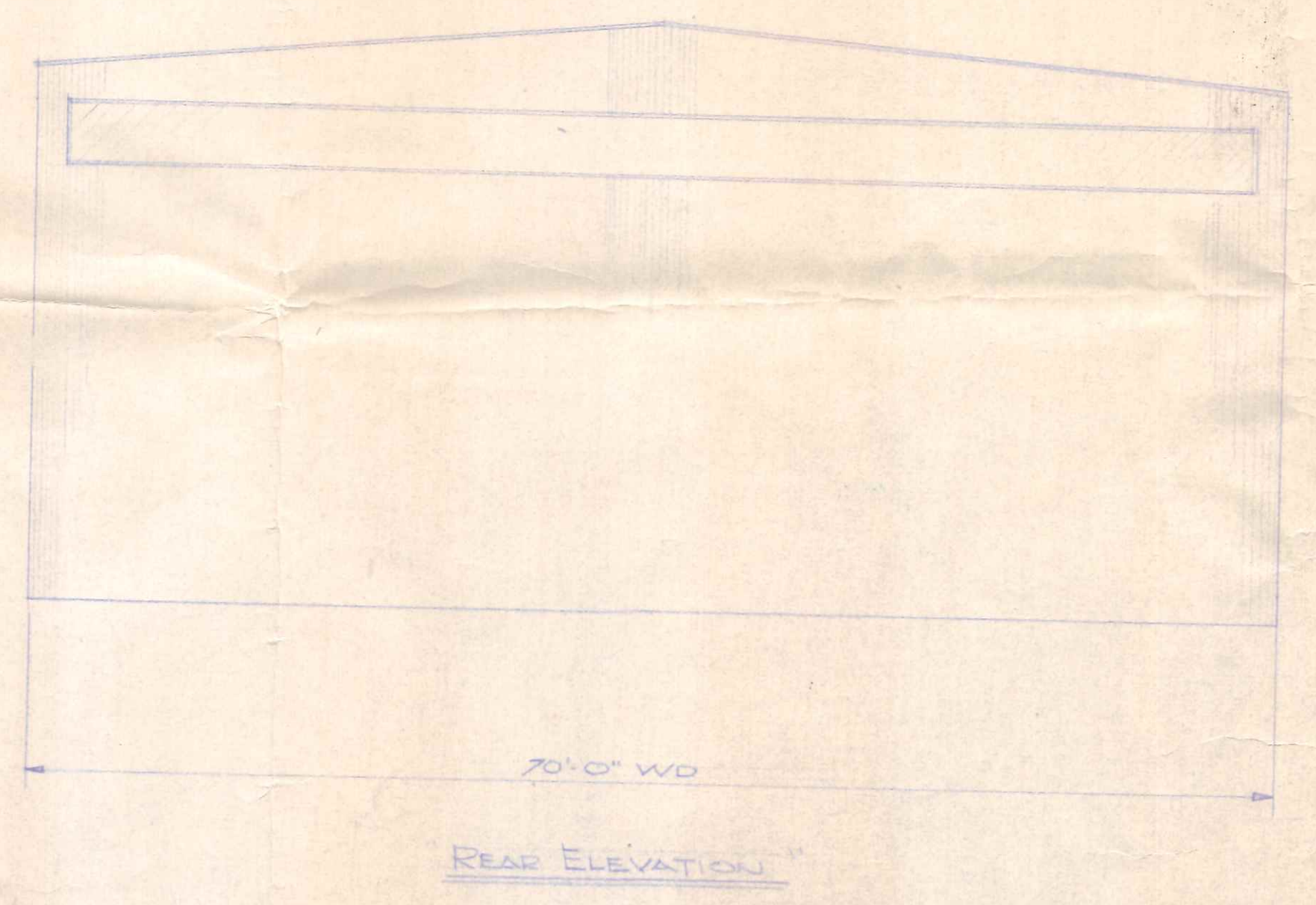
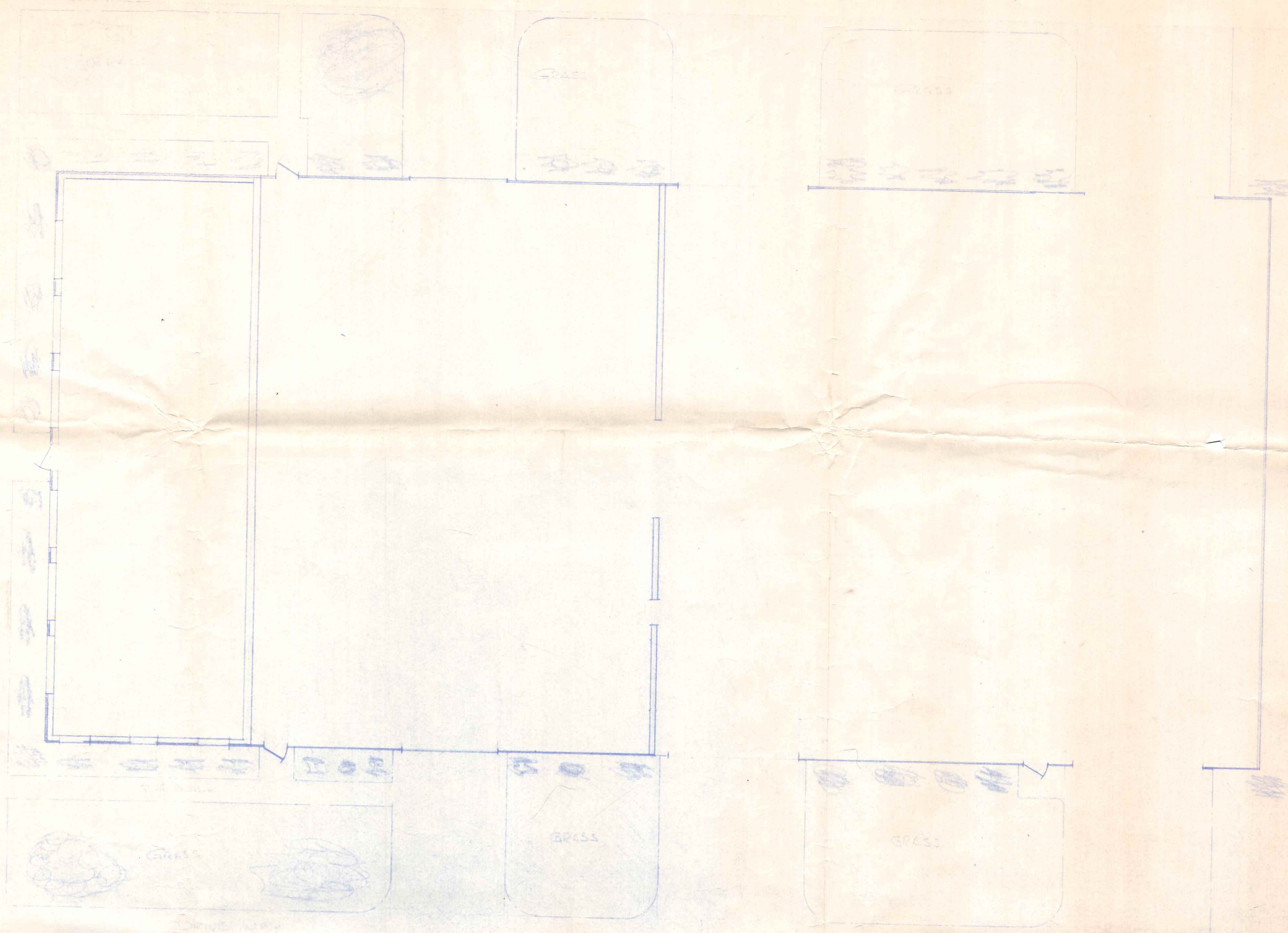


$150 \times 70 = 10500 \text{ sq ft}$   
 $10500 \times 1.25 = 13125$   
 $13125 + 43750 = 56875 \text{ lbs}$  Dead + Live Loads  
 $68750 @ 3000 \text{ lbs Bearing Power} = 22.9 \text{ sq ft}$  max 5'  
 $68750 @ 3000 \text{ lbs} = 22.9 \text{ sq ft}$  or 11 b'x8'



GRAY STEEL FABRICATING & MACHINE INC

1/75 Industrial